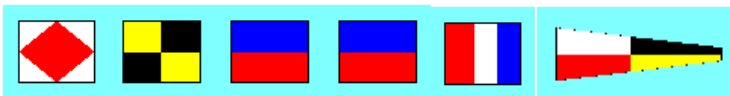


# Fleet 9 letter

SAN FRANCISCO BAY - CATALINA 36 ASSOCIATION



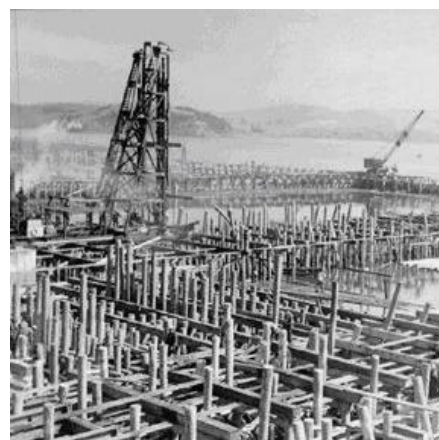
## ***Captain's Corner:*** by Kerry Roller

### ***Inside this issue:***

Captain's Corner	1
Survival Test	2
The Lazarette	3
Sausalito Cruise	4
April Events	5
First Aid / CPR Course	7
At the Helm	8

The Fleet's sailing year is off to a great start. The Sausalito trip was excellent. Thanks to Jeff and Mary Berman for putting together a well planned and fun cruise. The sail over on Friday evening was the right way to start a weekend. The weather was beautiful with a brisk breeze around 20 knots.

While Becky and I have been to the Bay Model before, this time we had a guided tour by the head ranger. His knowledge and willingness to share the history enhanced the tour greatly.



support the buildings and ship-ways.

The first keel is laid on June 28, 1942 for the *William A. Richardson*. The *William A Richardson* was launched from ship-ways No.6 at 3:30 PM September 26, 1942, 182 days after Marinship construction began. The ship was built in approximately 90 days.



1

### Fish

Any living creature that does not call the Coast Guard when faced with the prospect of being submerged for more than a minute.



After the Bay Model tour, some of us joined a walking tour of the Marinship Shipyard. Well what is left of it. Our tour guide started working at the shipyard at the beginning of WWII when he was 18 years old. Twenty thousand people work at the site building six ships at a time. For you history buffs try this link for some photos: <http://www.ci.sausalito.ca.us/shs/marinship/MarinshipColor.htm>

Some 30 thousand pilings were driven to



Continued on page 2

Our guide walked us over the remains of the shipyard. It is now mostly an office park with a few small marine shops using some of the Marinship facilities. Sixty years later it is hard to image the scope of activity that took place in this beautiful location.



What's next? How about a trip to the Farallone Islands? My first trip was last February as a guest on Mike Joyce's Interlude. I am looking forward to the weekend trip. I encourage you to check this out. The Farallone Islands are situated about 28 miles due west of the Golden Gate Bridge. Check the website for details.

I look forward to seeing you on the water.

Fairwinds,

Kerry Roller

Captain

Catalina 36 Fleet 9 San Francisco

## Can You Survive?

You are adrift on a private yacht in the South Pacific. As a consequence of a fire of unknown origin, much of the yacht and its contents have been destroyed. The yacht is now slowly sinking. Your location is unclear because of the destruction of critical navigational equipment and because you and your crew were distracted trying to bring the fire under control. Your best estimate is that you are approximately 1,000 miles South Southwest of the nearest land.

The following is a list of 15 items that are intact and undamaged after the fire. In addition to these articles, you have a serviceable or-equipped rubber raft large enough to carry yourself, the crew and all of the items listed in the table.

**Your task is to rank the 15 items in terms of their importance to your survival. # 1 the most important to # 15 the least.**

**Note:** Contents of all the survivors' pockets total a package of cigarettes, several books of matches, and five \$1 bills.

**(Answers on page 7) {Don't peek early!}**

**(Survival Ranking published in May)**

(Item)	(Ranking)
Sextant	
Shaving mirror	
Five Gallon can of Water	
Mosquito netting	
One case of Arm "C" rations	
Charts of the Pacific Ocean	
Seat Cushion (Flotation)	
Two Gallon can of oil-gas mixture	
Shark repellent	
Small Radio	
Twenty Square feet of opaque plastic	
1 quart of 160 proof rum	
Fifteen feet of nylon rope	
Two Boxes of chocolate bars	
Fishing Kit	

# The Lazarette

## Membership Dues are Due

Many of you have already sent in your dues. Thank you. There are also several people who have not. We would like to see those folks continue their membership. So if you've forgotten—please send them in as soon as you can. **Dues are \$25 and can be mailed to Ina Tabak, 219 Elm Wood Ct., Los Gatos, CA 95032.**

Remember if you are a new member or simply want to replace your burgee, just send in \$25 and we will get one out to you.

By the way, thank you Jeff and Mary Berman. It was a great cruise to Sausalito! What a great idea to arrange for the guided tour of the Bay Model. We thoroughly enjoyed the weekend  
*Thank you Ina Tabak*

## Very Cool Sailing Links

### Heavy Weather Boat Handling

<http://www.boatsafe.com/nauticalknowhow/heavy.htm>

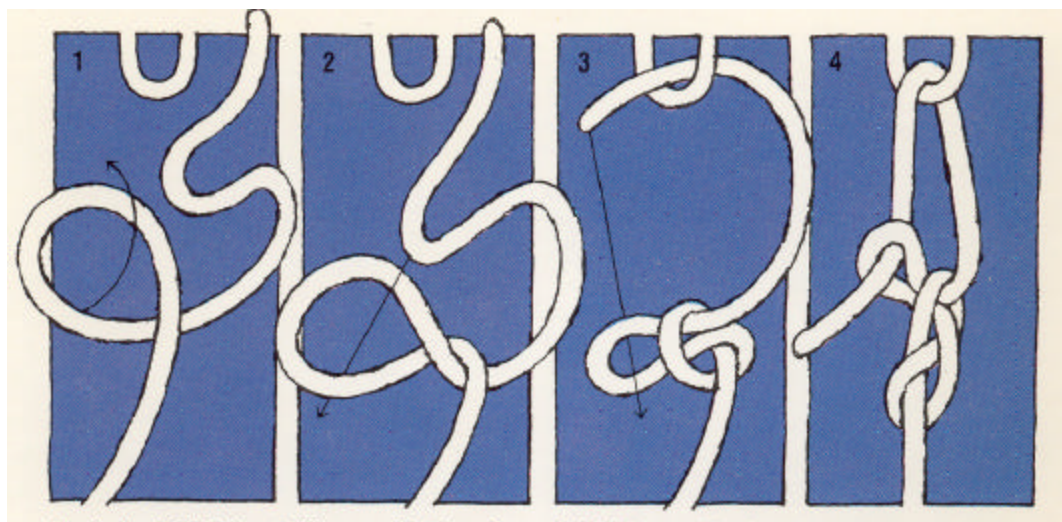
### Boating Courses, Boating Tips, Boating Safety, Boating Contests

<http://www.boatsafe.com>

### US Sailing

<http://www.ussailing.org/>

## The Trucker's Hitch



The Trucker's hitch is actually a combination of knots put together in order to get some leverage on the tightening process. It is a super knot for cinching down a load. Properly tied, you can get a line guitar-strumming tight with this hitch.

## ***Sausalito & The Bay Model Cruise—March 19-21*** by *Mary & Jeff Berman*

Six boats in all were able to make this cruise, with five (Nova – Ina Tabak and Mike Pernitzke, Clíodhna – Jim and Joan Carolan, Kick ‘n Back – Becky and Kerry Roller, Las Brisas – Bob Livingston) and Perseverance – Jeff and Mary Berman) making their 5 p.m. rendezvous just north of Clipper Cove.

The sail through the slot was excellent and exhilarating with 25+ knot winds, washing machine waters, spray in our faces and water over the bow. We all got at least one sail up during the course of the sail, even Perseverance with her right-hand-casted skipper! After a winter of no sailing, this was the season opener for most of us and quite a joy it was to finally get our winds back.

We rounded Angel Island and slid into the Sausalito channel to find our way to Schoonmaker Marina where we rafted up on a long end tie. Cocktails and dinner followed shortly with drinks on Perseverance and dinners where you chose followed by a fairly early night.

Saturday started bright, sunny and warm. We gathered (including Michael and Carol Weir who land cruised to the tour) around 9:30 for the trip over to the Bay Model where we had a guided tour. Most of the exhibits were only a couple of months old, so that even those who had been to the Model before, it was a “new” experience. For those who have not yet made the Bay Model a destination, it was thoroughly worth it. Most of us are planning the next trip so that we can actually walk through more slowly to read and listen to the various exhibits.

We had a surprise at the end of the tour, with a special invitation tour of the old Marinships buildings, waterfront and history of the area provided by a gentleman who had worked at the shipyards. The guys did the walking tour and the ladies (after a “where do you want to eat – restaurant or boat?” vote was taken) went over to Mollie Stone’s to buy food for dinner on board. The afternoon was spent baking in our cockpits and if Jim Carolan hadn’t put up his sunshade, we wouldn’t have had to change into our fleeces when the fog came over the hills and chilled us all down.

Champagne arrived single handedly with Richard around 6, with Francine, Madeleine and Elisabeth arriving by car about the same time. By that time, the winds had picked up to 25+ knots again, with 30+ gusts. Suffice to say that we all crowded into Perseverance with food, drink, and a lot of warmth, while Mike and Jeff braved the cold and wind (at this point up to 35+ knot gusts) to grill the dinners.

Sunday broke foggy and cloudy and by 10 or so, Las Brisas, Kick ‘n Back, and Nova had all departed, leaving Champagne, Perseverance and Clíodhna to enjoy the afternoon in Sausalito and were missed. We are looking forward to many interesting cruises this year.



### ***Hell's Bells!***<sup>3</sup>

(Nautical expletive)

“According to old nautical dictionaries, the comparatively mild Hell’s Bells! Is a shortened version of the nineteenth-century expletive Hell’s Bells and Bucks of Blood!”

# April 2004

Sun	Mon	Tue	Wed	Thu	Fri	Sat
				1	2	3 Opening Day So. Bay
4 Opening Day So. Bay	5	6	7	8	9	10
11	12	13	14	15	16	17
18	19	20	21	22	23	24 Farallon Islands
25 Farallon Islands	26	27	28	29	30	

## Schedule of Events

- April 2,3,4 – Opening Day on the South Bay
- April 24 & 25—Farallon Island & Drakes Bay Cruise
- May 15 & 16—China Camp
- June 20—South Beach/ McCovey Cove

## On this Date

- On April 1, 1967** the USCG became part of the newly established Department of Transportation.
- On April 24 1961**, the 64-gun ship “Vasa” sunk in 1628, was raised from the bottom of Stockholm Harbor, Sweden.

## Farallon Island & Drakes Bay Cruise: Hosted by - Mike Joyce, Interlude

Well, here it is: Your first chance in 2004 to air it out with your Fleet 9 buddies outside the Gate.

On Saturday, April 24 at 0900 Fleet 9 meet at the city front in front of the Golden Gate yacht club. We will head out the gate on a gentle ebb, heading of roughly 240 deg M, watching for California grey whales seals and dolphins and the fearsome great white sharks that feed at Seal Rock . After about 26mn, We could expect to round S.E Farallon between 1200 and 1400. Be sure to bring a camera. I ts some of the most dramatic geology anywhere up or down the West Coast.

The full featured event will take the hosted tour on a heading of roughly 355 deg M about 18nm north of SE Farallon to Drake's Bay to drop the hook and spend the night at anchor.

After a restful night, a big breakfast and a second cup of coffee, we will raise anchor and leave Drake's Bay at 0900 for the DDW run back to the gate to take advantage of the 2 knot flood in the afternoon.

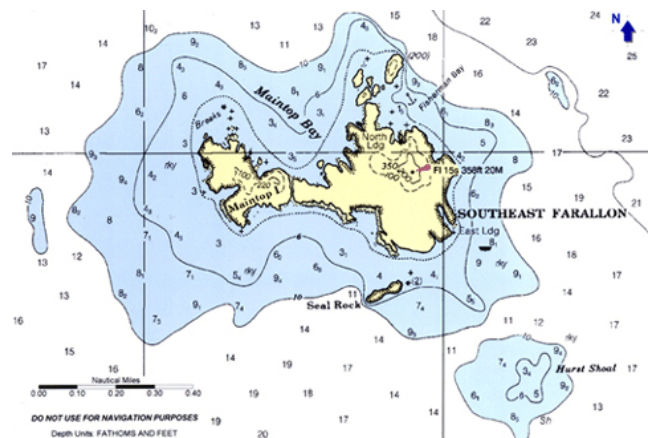
**If you can join us, contact Mike Joyce (m\_joyce@sbcglobal.net) or by phone: 510-289-2013.**

**Please** remember, if you're uncomfortable about conditions anywhere on a cruise, you should stay in port even if the rest of the Fleet continues on. All cruises are for enjoyment and personal satisfaction, not danger.

**Safety.** You should have all the Coast Guard mandated safety equipment on board, wear life jackets with harnesses (or use a separate harness) when at sea have jack lines rigged, and have tethers available. If you do not know what any of these are, or are not sure how to rig or use them, you can find that information in most sailing books.

You should also have the appropriate charts on board and a working GPS.

**Communication** will be on channel 72. (also Monitor Channel 16) Be sure to fly your Fleet 9 burgee.



## February Red Cross First Aid CPR/AED Course by Jeffrey Berman

February Red Cross First Aid CPR/AED Course

On February 14<sup>th</sup> (Valentines day appropriately) Ina Tabak, Bob Livingston, Michael and Torben Mann spent the day with the Red Cross in Alameda getting their certifications in First Aid, CPR and the use of automated external defibrillator (AED) The course was well worth the time and expense to learn how to save a life or provide basic first aid to someone that has been injured.

With all sailors spending time in an environment inherent to risk (cold water, many large moving parts controlled by the wind that can easily injure someone) and not being readily or quickly accessible to emergency services within minutes as we are used to on land we found this to be a great investment in our time.

Just think how long will it take the Coast Guard or local sheriff to get an EMT team to you in the middle of the bay on a nice afternoon if something happens? 5, 15, 30 Minutes? And then how long will it take to get an injured person off your boat and to a medical facility???

So please do think about it, take a local course, learn how to save a life. To put it in a very realistic Perspective when fleet 9 cruises, if something was to happen, you now have a choice, "Call a first aid trained fleet 9 member or call your life insurance person.

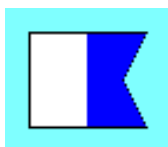
For more information on where to attend a course go to

<http://www.bayarea-redcross.org/>

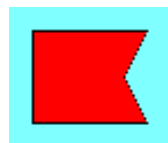
By Torben Mann 2/16/04 for Fleet 9 newsletter.

## Do You Know Your International Code Flags?

Check Out This Site: <http://www.anbg.gov.au/flags/signal-flags.html>



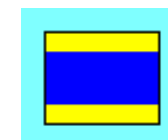
**A** [Alpha ] (Diver Down, Slow Keep Well Clear)



**B** [Bravo ] (Dangerous Cargo)



**C** [Charlie] (Yes—Affirmative)



**D** [Delta] (Maneuvering with Difficulty: Keep Clear)

(Item)	Rank	Difference Between your rank and the answer	Description
Sextant	15		With no Clock or tables; it's a paperweight
Shaving mirror	1		The Best Signaling Device
Five Gallon can of Water	3		You will need this for the long haul
Mosquito netting	14		Not much of a bug problem 1000 miles from shore
One case of Arm "C" rations	4		Will need these for the long haul.
Charts of the Pacific Ocean	13		No campus or starting location not of much use.
Seat Cushion (Flotation)	9		This can be somewhat useful
Two Gallon can of oil-gas mixture	2		Very good signaling device, use the matches
Shark repellent	12		Might be too little to late
Small Radio	10		Not a transmitter, of little use
Twenty Square feet of opaque plastic	5		Good for shade and catching rain water
1 quart of 160 proof rum	11		Good for cuts only
Fifteen feet of nylon rope	8		Useful in any nautical situation
Two Boxes of chocolate bars	6		Will help to keep your energy up
Fishing Kit	7		Useful for the long haul

## At The Helm

### Captain

Kerry Roller (408) 779-7555 [Kerry@sales-analytics.com](mailto:Kerry@sales-analytics.com)

### Cruise Coordinator

Jennifer Mann (925) 829-5679 [yesDearIII@aol.com](mailto:yesDearIII@aol.com)

**Catalina Fleet 9 Web Page** <http://www.catalina36fleet9.org>

### Secretary & Treasurer

Ina Tabak (408) 866-5042 [mikeandina@comcast.net](mailto:mikeandina@comcast.net)

### Membership Chairman

Bob Livingston (408) 227-0517 [livingr@pacbell.net](mailto:livingr@pacbell.net)

### Newsletter Editor

Michael Weir (408) 978-0420 [mdweir@mindspring.com](mailto:mdweir@mindspring.com)

### Technical Consultant

Jeff Berman (510) 339-6180 [jeff@fogcty.com](mailto:jeff@fogcty.com)

### Web Consultant

Torben Mann (925) 829-5679 [YesDearIII@aol.com](mailto:YesDearIII@aol.com)

0



1

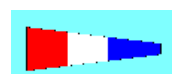


9

2



3



4



5



6



7



8

